

1



Cut-outs

Friday

Morning	
08:00	
09:45	
11:30	
Afternoon	
13:15	
15:45	
16:30	
Evening	
18:00	
Night	
20:15	
21:45	

Friday

Morning	
08:00	
09:45	
11:30	
Afternoon	
13:15	
15:45	
16:30	
Evening	
18:00	
Night	
20:15	
21:45	

Cut-outs



Units of non renewable energy	Units of renewable energy
Coal 5 units	
Coal 10 units	
Oil 5 units	
Oil 10 units	
Gas 5 units	
Gas 10 units	
Total number lost:	Total number collected:
Total number of units at the end of the game:	

Cut-outs

Name of substance: _____

Predictions

I think...

It dissolves in water.

It doesn't dissolve in water.

Instructions

Put a spoonful in water and mix. Wait a few minutes.

What happens?

It dissolves in water.

It doesn't dissolve in water.

It sinks to the bottom.

It floats to the top.

Name of substance: _____

Predictions

I think...

It dissolves in water.

It doesn't dissolve in water.

Instructions

Put a spoonful in water and mix. Wait a few minutes.

What happens?

It dissolves in water.

It doesn't dissolve in water.

It sinks to the bottom.

It floats to the top.

Name of substance: _____

Predictions

I think...

It dissolves in water.

It doesn't dissolve in water.

Instructions

Put a spoonful in water and mix. Wait a few minutes.

What happens?

It dissolves in water.

It doesn't dissolve in water.

It sinks to the bottom.

It floats to the top.

Name of substance: _____

Predictions

I think...

It dissolves in water.

It doesn't dissolve in water.

Instructions

Put a spoonful in water and mix. Wait a few minutes.

What happens?

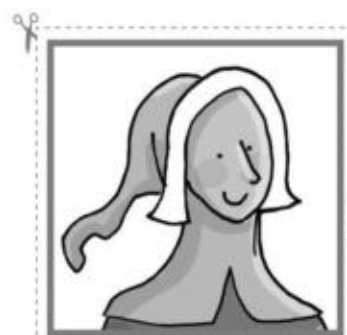
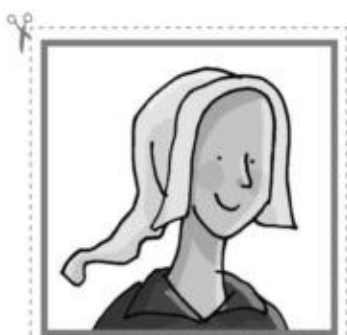
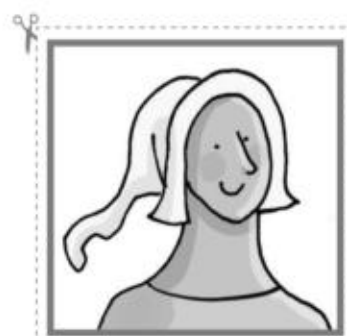
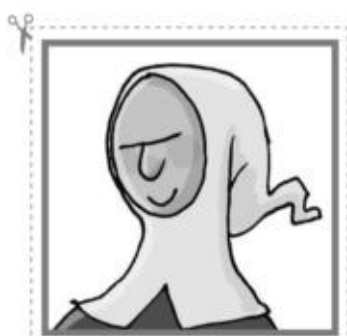
It dissolves in water.

It doesn't dissolve in water.

It sinks to the bottom.

It floats to the top.

Cut-outs



Cut-outs

Time of journey: London to York

Chart A

Date	Time	vehicle
1760s	4 days	stagecoach
1820s	_____	_____
1840s	14 hours	steam train
1850 s	_____	_____
1990s	2 hours	electric train
1950s	_____	_____
1980s	6 hours	coach
1990s	_____	_____

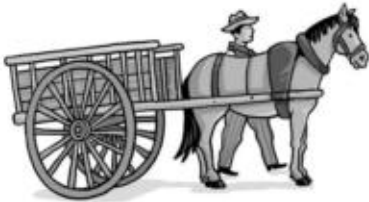


Chart B

Date	Time	vehicle
1760s	_____	_____
1820s	30 hours	mail coach
1840s	_____	_____
1850s	5 hours	steam train
1990s	_____	_____
1950s	8 hours	car
1980s	_____	_____
1990s	4 hours	car



Cut-outs

Chart A

	yesterday	tomorrow
prepare food for the bears		
build a tree house		
clean the enclosures		
play with the monkeys		
ride the elephants in the forest	✓	
take the elephants to the river	✓	
make supper		✓
clean the wildlife centre		✓

Chart B

	yesterday	tomorrow
prepare food for the bears	✓	
build a tree house		✓
clean the enclosures	✓	
play with the monkeys		✓
ride the elephants in the forest		
take the elephants to the river		
make supper		
clean the wildlife centre		

Cut-outs

Does the blood go away from the heart along the veins?

Do most of the arteries carry oxygen?

Does the blood go back to the heart along the veins?

Do most of the veins carry oxygen?

Does the blood go away from the heart along the arteries?

Do most of the arteries carry carbon dioxide?

Does the blood go back to the heart along the arteries?

Do most of the veins carry carbon dioxide?

Cut-outs 1

Personality quiz

1 a = 3; b = 1; c = 0 / 2. a = 2; b = 3; c = 0

Results: 6-4 points: You are very friendly. You like talking to people.
3-2 points: You aren't very friendly.
1-0 points: You are very shy. You find it hard to make new friends.

3 a = 3; b = 0; c = 1 / 4. a = 3; b = 2; c = 0

Results: 6-4 points: You're very helpful with your classmates.
3-2 points: Your ideas are not always helpful.
1-0 points: You are very selfish.

5 a = 3; b = 1; c = 0

Results: 3 points: You are always cheerful. 1 point: You are a bit pessimistic.
0 points: You are very pessimistic.

6 a = 2; b = 3; c = 0

Results: 3 points: You are often mean. 2 points: You aren't very kind.
0 points: You are often very kind.

Cut-outs 2

✂
anorak

woolly hat

✂
gloves

boots

✂
cap

sandals

✂
cardigan

jacket

✂
jeans

rain hat

✂
wellies

trainers

TV

radio

newspaper

magazine

comic

internet

headlines

sections

advertisements

TV guide

culture

jokes and
cartoons

electricity

power station

solar panels

windmill

dam

rubbish

geyser

wave and tidal

rivers

sun

air

sea

solid

liquid

gas

sugar

salt

coffee

flour

oil

sand

chocolate
powder

tea leaves

pepper

✂
temple

palace

✂
castle

convent

✂
baths

theatre

✂
forum

harbour

✂
stadium

gymnasium

✂
pyramid

ball court

stagecoach

sledge

tunnel

glider

hot air balloon

zeppelin

walk / walked

travel /
travelled

pull / pulled

carry / carried

ride / rode

have / had

elephant

monkey

bear

wolf

eagle

mink

endangered

pollution

natural habitat

invasive
species

patrol

monitor

oxygen

carbon dioxide

brain

spinal column

cheerful

pessimistic

helpful

selfish

friendly

shy

kind

mean